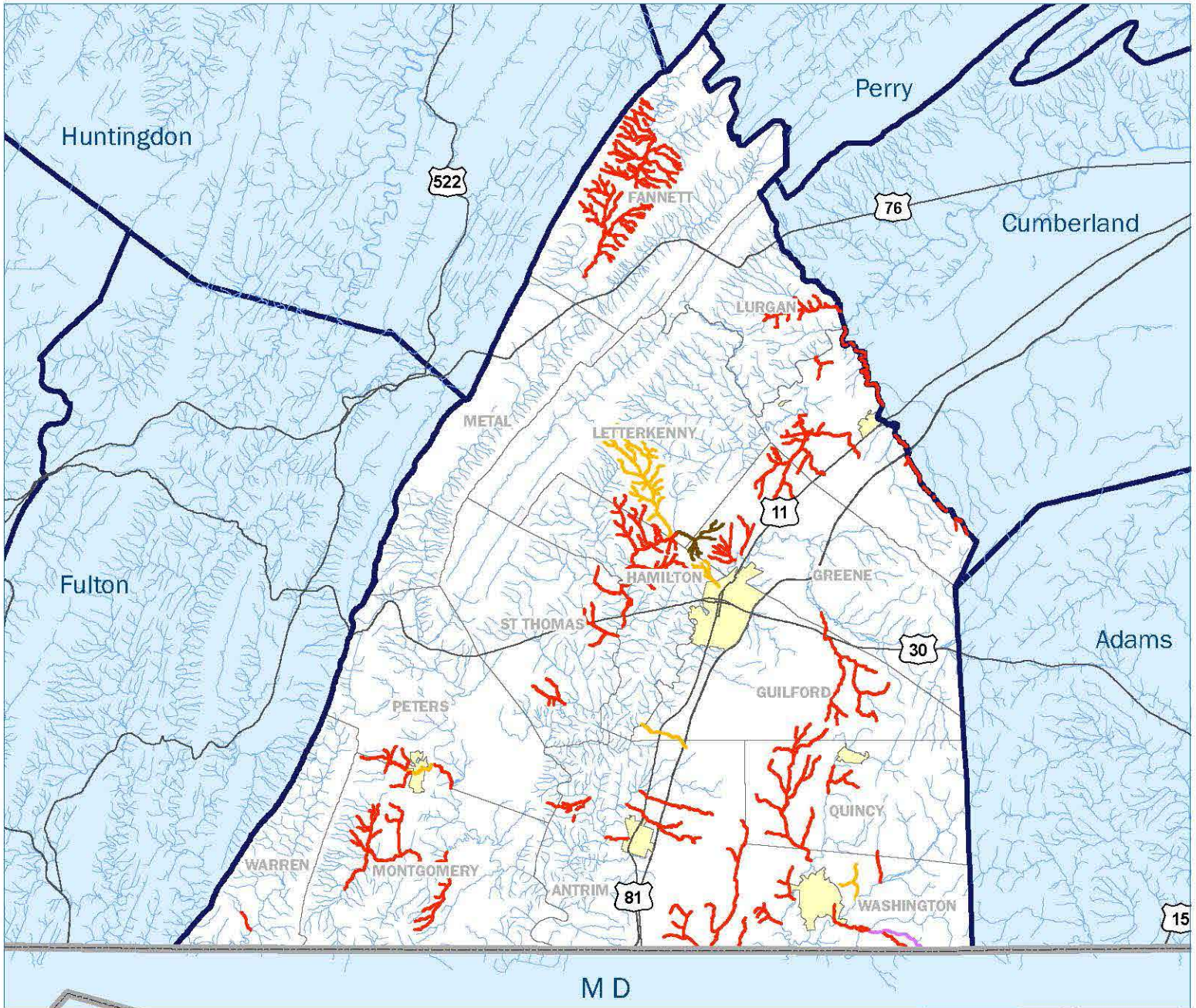
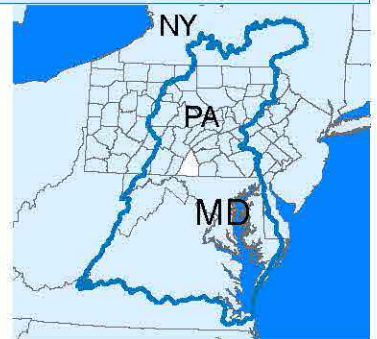


IMPAIRED WATERWAYS IN FRANKLIN COUNTY, PENNSYLVANIA



**IMPAIRED WATERWAYS:
MILES BY TYPE**

- | | | | |
|--------------------------------|--------------------------------|--------------------------|-----------------------|
| Agriculture - 260 mi. | Municipal Point Source - 3 mi. | Major Roads | County Boundary |
| Urban/Suburban Runoff - 32 mi. | Other - 6 mi. | State Boundary | City/Town |
| River/Stream - 1579 mi. | | Chesapeake Bay Watershed | Municipality Boundary |



CHESAPEAKE BAY FOUNDATION
Saving a National Treasure

Source: Integrated List NonAttaining, PA DEP, 2014; Lists Primary Sources of Impairment Only.