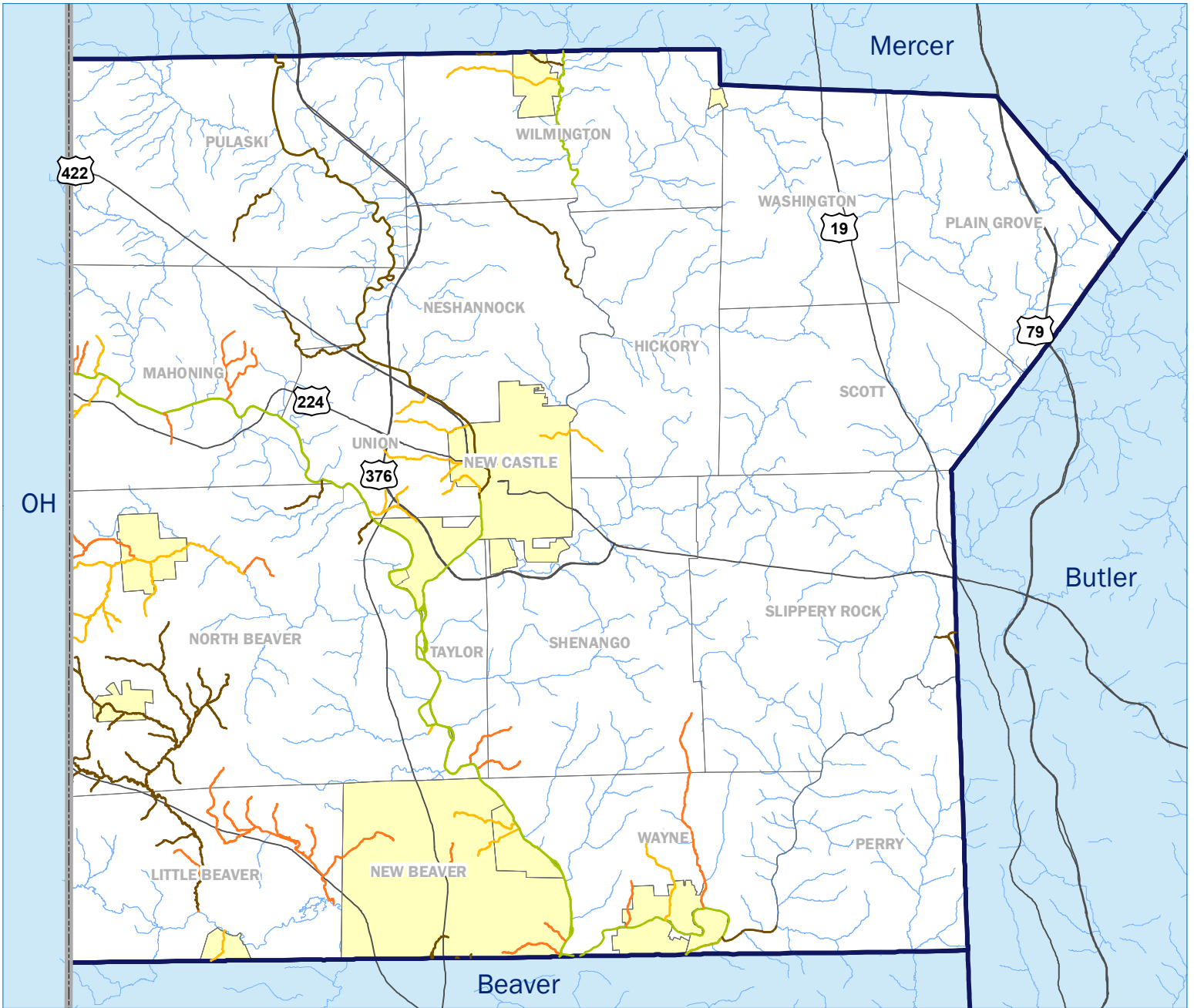


# IMPAIRED WATERWAYS IN LAWRENCE COUNTY, PENNSYLVANIA



**IMPAIRED WATERWAYS:  
MILES BY TYPE**

- |                                  |                         |                          |                       |
|----------------------------------|-------------------------|--------------------------|-----------------------|
| Abandoned Mine Drainage - 34 mi. | Source Unknown - 74 mi. | River/Streams - 569 mi.  | County Boundary       |
| Urban/Suburban Runoff - 32 mi.   | Other - 58 mi.          | Major Roads              | City/Town             |
|                                  |                         | Chesapeake Bay Watershed | Municipality Boundary |



**CHESAPEAKE BAY FOUNDATION**  
*Saving a National Treasure*

Source: Integrated List NonAttaining, PA DEP, 2014; Lists Primary Sources of Impairment Only.